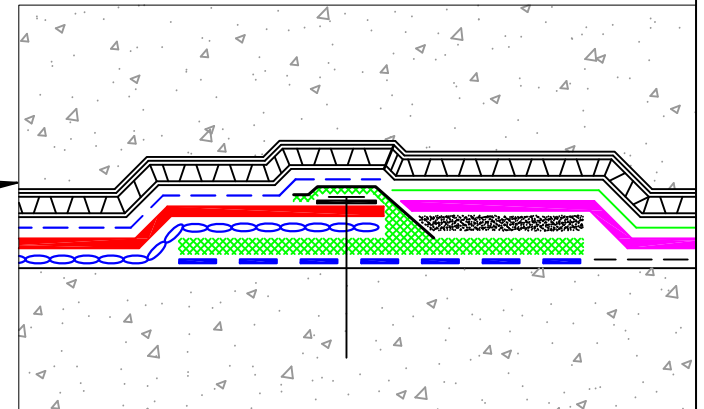
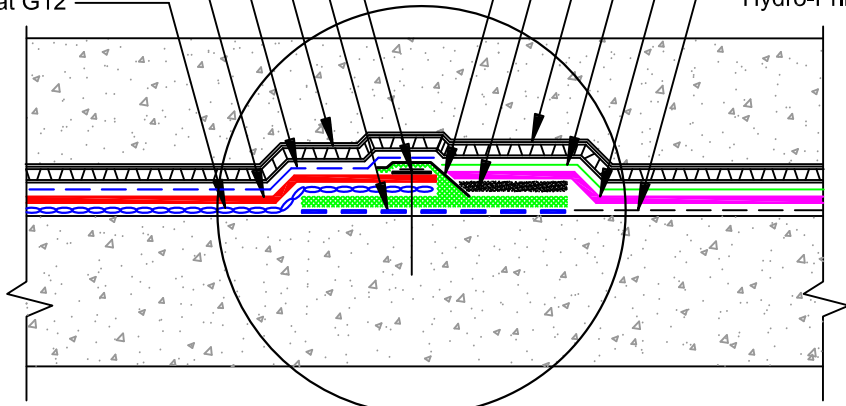


- Termination Bar
- HP 9112 MMA Primer
- Gard-Drain 700/or 990
- HDPE Protection Roll or Hydro-Ultra Mat G12 (Spot Weld Seams of HDPE)
- Hydro-Prufe 80 mil PVC Membrane (Loose Laid)
- Hydro-Ultra Mat G12
- HP Liquid Flashing 9800 & Fabric Reinforcement
- Aggregates Embedment in HP-9800 Liquid Flashing
- Gard-Drain 700 or 990
- Hydro-Tuff PB 25
- Hydro-Tuff HFA Membrane
- Hydro-Primer



DETAIL NAME:

TIE-IN (HYDRO-PRUFE & HYDRO-TUFF)

Scale:	Date:	Drawing #:
NTS	10-27-15	HP-SD-003